

## ***SERTIFERA*, A NEW GENERIC RECORD FOR THE PERUVIAN ORCHID FLORA**

DELSY TRUJILLO<sup>1-3,6</sup> & MARGOTH ACUÑA-TARAZONA<sup>4,5</sup>

<sup>1</sup> Facultad de Ingeniería Agraria, Universidad Católica Sedes Sapientiae, Jirón Manuel Gonzales Prada Mz. Unica Sub-lote 4-B, Urb. Villa Los Ángeles, Los Olivos, Lima, Perú

<sup>2</sup> Herbario San Marcos (USM), Museo de Historia Natural de la Universidad Nacional Mayor de San Marcos, Lima, Perú

<sup>3</sup> Herbario MOL, Facultad de Ciencias Forestales, Universidad Nacional Agraria La Molina, Perú

<sup>4</sup> Red de Ecología Funcional, Instituto de Ecología A. C., Xalapa, Veracruz, México

<sup>5</sup> Laboratorio de Gymnospermas y Monocotiledóneas, Museo de Historia Natural, Jesús María, Perú

<sup>6</sup> Author for correspondence: [dtrujillo@ucss.edu.pe](mailto:dtrujillo@ucss.edu.pe)

**ABSTRACT.** An orchid species, previously known from Northern Andes, is reported for first time in Peru: *Sertifera purpurea*. A description, illustration, photographs, and comments about the species are provided.

**RESUMEN.** Una especie de orquídea, previamente conocida de los Andes del Norte, se reporta por primera vez para el Perú: *Sertifera purpurea*. Se presenta una descripción, ilustración, fotografías y comentarios sobre la especie.

**KEY WORDS / PALABRAS CLAVE:** Bosque de Protección Alto Mayo, Peru, Sobralieae

**Introduction.** There are currently four recognized genera in the Neotropical tribe Sobralieae: *Elleanthus* C. Presl, *Epilyna* Schltr., *Sertifera* Lindl. & Rchb.f. and *Sobralia* Ruiz & Pav. (including *Brasolia* (Rchb.f.) Baranow, Dudek & Szlach.) (Neubig *et al.* 2011, Chase *et al.* 2015, Baranow, Dudek & Szlachetko 2017).

Orchids of the genus *Sertifera* have relatively small flowers of bright colors, which resemble the flowers of *Elleanthus*. Vegetatively, *Sertifera*, like *Elleanthus* and *Sobralia*, are caespitose plants with slender, elongate cane-like stems and plicate leaves. However, *Sertifera* is easily distinguished from the other genera of the tribe by having leaf sheaths with tubercles, axillary and secund or subcapitate inflorescences, and flattened peduncle.

Lindley and Reichenbach (Reichenbach 1877) described *Sertifera* with two species: *S. purpurea* Lindl. & Rchb.f. from Ecuador (with “lateral corymbose” inflorescence) and *S. virgata* Rchb.f. from Peru (with terminal racemes inflorescence). However, the latter was transferred by Schweinfurth (1938) to *Elleanthus*. The second species of *Sertifera*, from Ecuador, was described by Kraenzlin (1899) but hiding under the

name of *Diothonea lehmanniana* Kraenzl. (transferred to *Sertifera* by Garay in 1978). Schlechter (1920, 1924) then described three species from Colombia: *Sertifera colombiana* Schltr., *S. major* Schltr. and *S. parviflora* Schltr. Subsequently, Williams (1939) and Schweinfurth (1946) described two more species from the same country: *S. grandifolia* L.O. Williams and *S. aurantiaca* C. Schweinf., respectively. Recently, another three species have been proposed for Colombia: *S. gracilis* Rchb.f. ex Szlach. & Baranow, *S. risaraldana* Szlach. & Baranow and *S. albiflora* Szlach., Kolan. & Medina Tr., (Szlachetko & Baranow 2014, Szlachetko, Kolanowska & Medina Trejo 2014). Thereby, at the moment ten species are referable to *Sertifera*.

*Sertifera* has been referred as a genus restricted to the northern Andes, species have been reported from Ecuador, Colombia, and Venezuela between 1,000 and 3,600 m of elevation (Schlechter 1924, Szlachetko & Baranow 2014).

Recent field work in the North of Peru revealed the presence of populations of *S. purpurea*; which represent the first record for this country. Previously,

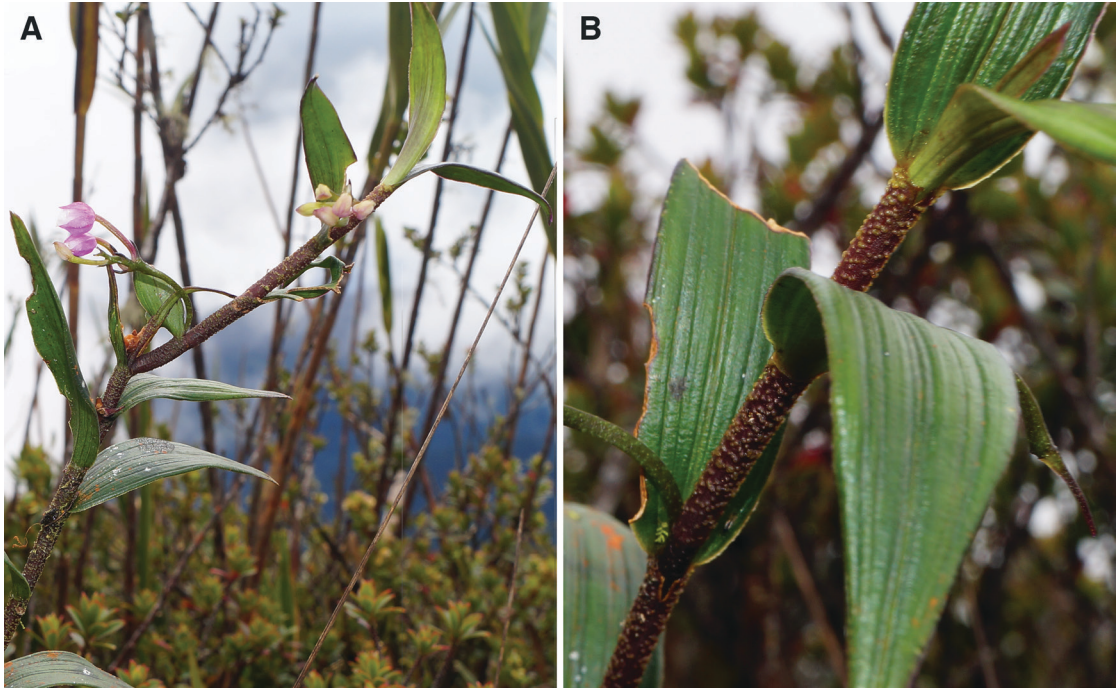


FIGURE 1. *Sertifera purpurea*. A. Plant in its natural habitat showing a branched stem. B. Verrucose leaf sheaths. Photographs by J. Edquén.

during a Rapid Assessment in The Cordillera del Cóndor, next to the Ecuadorian border, two specimens (one sterile) were collected and identified as *Sertifera* sp. (Schulenberg & Awbrey 1997). Those specimens are housed at MOL and were examined for this present study. Here, we formally record the genus *Sertifera* for Peru and provide a description of *Sertifera purpurea* based on the Peruvian specimens.

#### TAXONOMIC TREATMENT

*Sertifera purpurea* Lindl. & Rchb.f., *Linnaea* 41: 64. 1877.

TYPES: Ecuador, [Andes Quitensis], Tungurahua; *Spruce 5394* (syntype: W-76627, photo seen, designated as lectotype by Garay, 1978). Ecuador, [Quito], *Jameson s.n.* (syntype W-76625, photo seen). Ecuador, [Valley of Lloa, 1857], *Jameson s.n.* (syntype: K-501912, photo seen, (mixed), photo at AMES). Ecuador, [from the forest on the western slope of the Andes, 1854] *Jameson s.n.* (syntype: K-501912, photo seen, (mixed), photo at AMES).

Synonym: *Sertifera lehmanniana* (Kraenzl.) Garay,

Fl. Ecuador 9: 135. 1978. *Diothonea lehmanniana* Kraenzl., *Bot. Jahrb. Syst.* 26: 489. 1899. TYPE: Ecuador. Pichincha: Western declivity of Cerro Corazón, near Canchacoto on Río Pilatón, [2000 m, Jan 1881], *Lehmann 126* (G-422011, photo seen, lectotype, designated by Garay, 1978; isolectotype G[x2], photos seen, HUH-82476 [flower at AMES ex G], photo seen).

*Plant* terrestrial, up to 1 m tall. *Stem* cane-like, erect to slightly arcuate, enclosed by reddish brown verrucose tubular leaf sheaths, unbranched (rarely branched), leafy above (Fig. 1A, B). *Leaves* somewhat coriaceous, blades ovate-lanceolate to elliptic-lanceolate, acuminate, plicate, margins minutely erose, sessile on tubular sheaths, 3.1–7.7 × 0.7–1.8 cm. *Inflorescence* axillary, arcuate, subcapitate, shorter than the subtending leaf; peduncle flattened, 1.0–2.5 cm long; rachis 0.7–1.0 cm long, 6 to 8 flowers. *Floral bracts* linear-lanceolate, acute to acuminate, green turning blackish purple, 2.0–4.5 mm long (decreasing in size towards the apex). *Flowers* globose, sepals and petals pink to purplish, lip and tip of petals white (Fig. 2A); ovary and pedicel green to red-violet. *Dorsal*

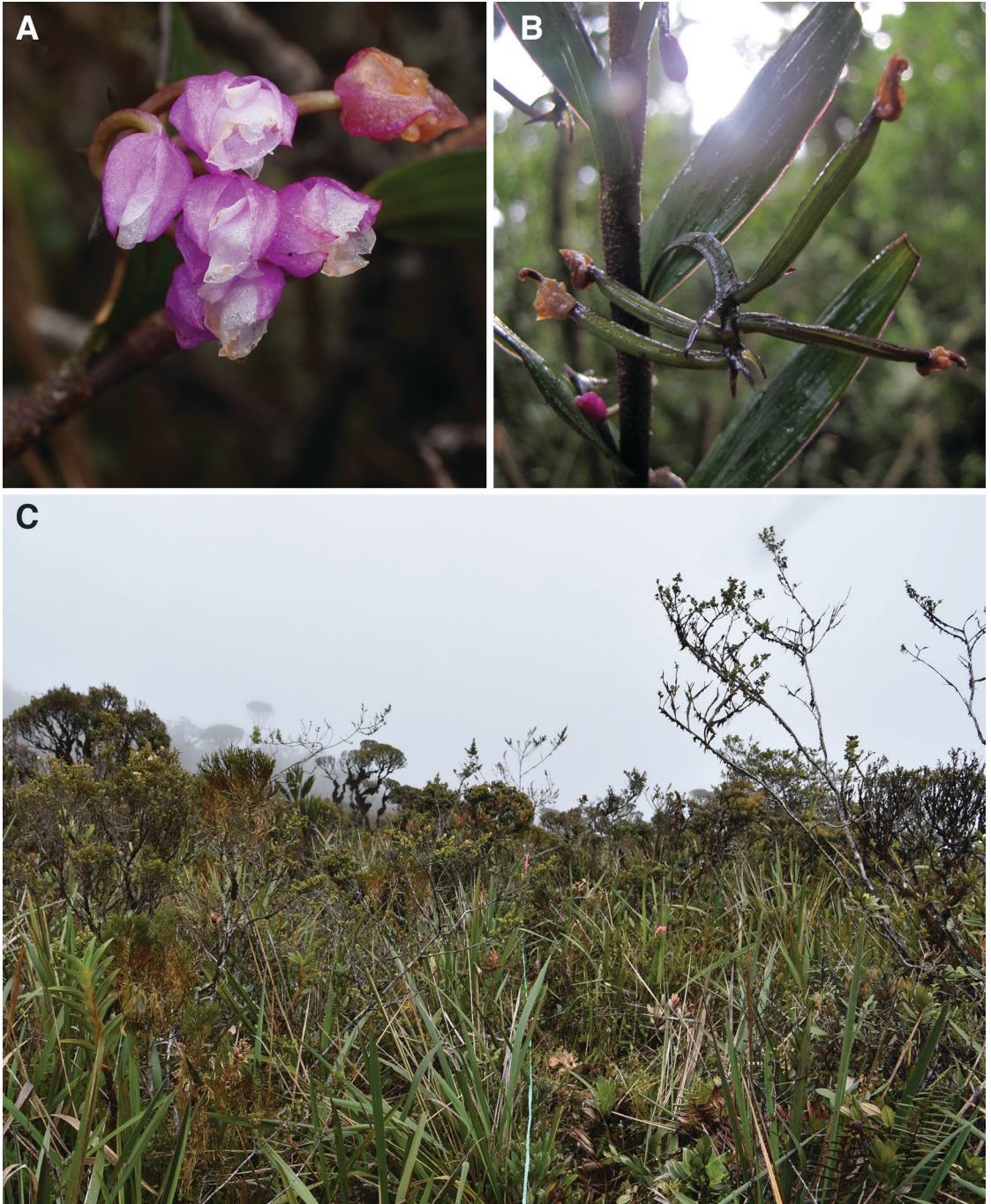


FIGURE 2. *Sertifera purpurea* A. Inflorescence B. Fruits, C. Habitat. Photographs A by J. Edquén; B, C by M. Acuña-Tarazona.

*sepal* elliptic, acute to obtuse, minutely mucronate at apex, 3-nerved, 5.5–6.5 × 3–4 mm. *Lateral sepals* slightly connate at base, oblique, elliptic, acute, mucronate, dorsally carinate, 3-nerved, 6–7 × 3–4 mm.

*Petals* ovate-elliptic to subrhombic, obtuse, somewhat undulate towards the apex, 1-nerved (sometimes with 1 or 2 short lateral nerves), 5–7 × 3.0–3.5 mm. *Lip* enfolding the column, basally saccate, conduplicate,

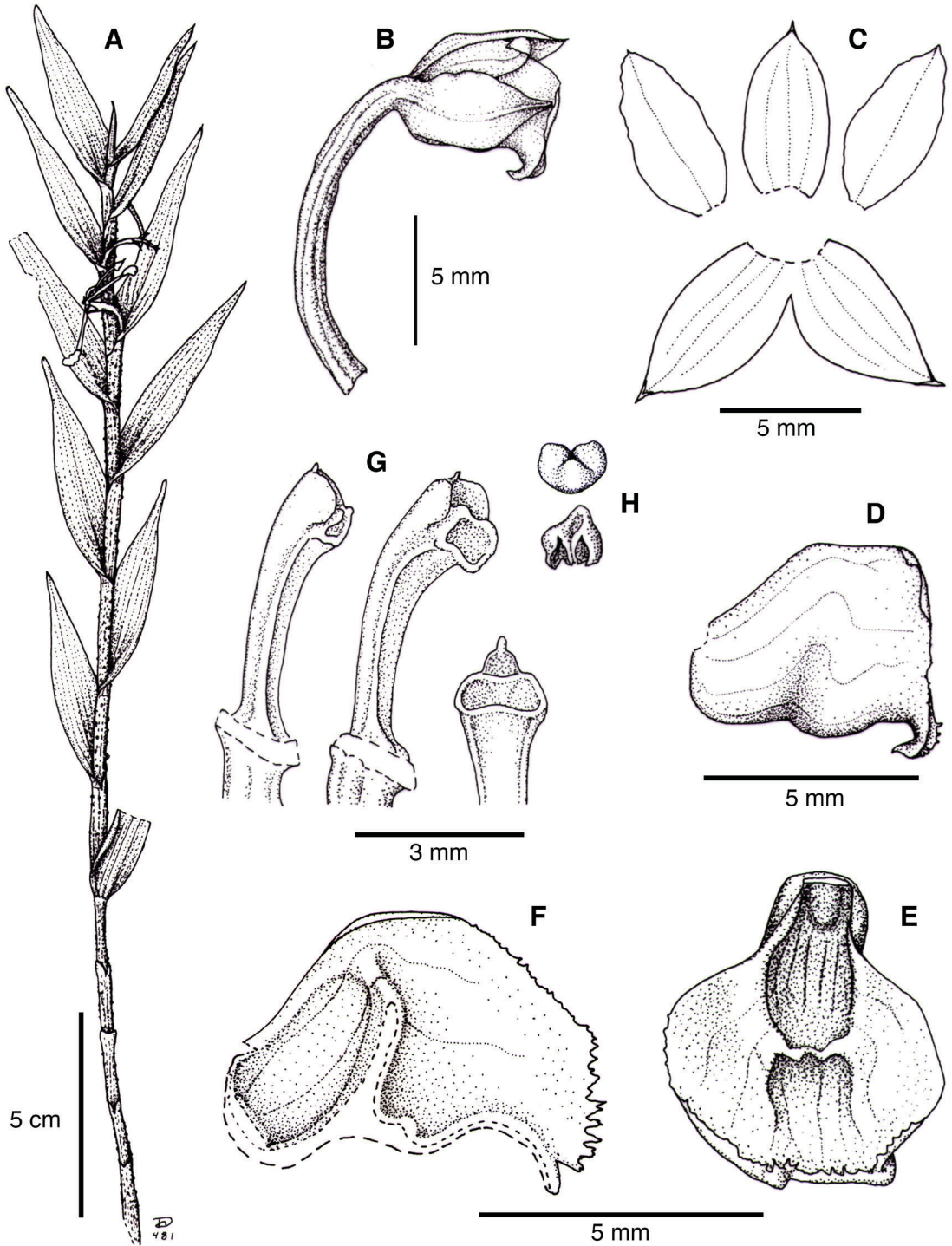


FIGURE 3. *Sertifera purpurea*. A. Habit. B. Flower. C. Dissected perianth. D. Lip, lateral view. E. Lip, ventral view, F. Lip, longitudinal section. G. Column (from two different flowers). H. Anther cap. Drawing by D. Trujillo based on *M. Acuña 1803* (USM).

flattened laterally, seen from the side subquadrate-obovate, when expanded transversely elliptic, base of the lip thickened, with a small callus, disc provided with a transverse, plate-like ridge which holds the two sides together, the upper margins involute and irregularly erose to shortly lacerate, 5.5–7.0 mm long. *Column* slender, slightly curved upward, auriculate at apex, 3.5–5.0 mm long. *Anther* reniform, 1 mm long. *Stigma* bilobed. *Ovary* cylindrical, curved, glabrous, 7–14 mm long. *Fruit* narrowly ellipsoid, 13–17 × 2–5 mm (Figs. 2B, 3).

**SPECIMEN EXAMINED:** Peru. [Amazonas, Prov. Condorcanqui], Cordillera del Cóndor, [July -August 1994] *M. Cavero 1636* (MOL). San Martín, Prov. Rioja, Distrito Pardo Miguel Naranjos, Bosque de Protección Alto Mayo, 2500 m, 13 April 2017, *M. Acuña et al. 1803* (USM). Same locality, 3053 m, 23 May 2017, *M. Acuña et al. 1969* (USM).

**OTHER SPECIMENS:** Peru [Amazonas, Prov. Condorcanqui], Cordillera del Cóndor, [July -August 1994], *M. Cavero 1627* (MOL [sterile]).

**DISTRIBUTION:** Venezuela, Colombia, Ecuador, and Peru. In Peru, it is known in the Departments of Amazonas and San Martín, between 2,150 and 3,053 m elevation (Fig. 4).

**HABITAT AND ECOLOGY:** Plants of this species were found growing in shrub vegetation with small trees up to 5 m tall, dominated by *Podocarpus oleifolius* D. Don ex Lamb., *Clusia* sp., *Weinmannia* sp., *Miconia* sp., and *Myrcia* sp., and open areas with herbs and small shrubs (Fig. 2C). Individuals with flowers and fruits were recorded in April, May and October.

*Sertifera purpurea* and *S. lehmanniana* were described based on plants from the north-central Andes of the Ecuador. The type specimens of *S. purpurea* were collected in the Province of Tungurahua (*Spruce 5394*) and the Province of Pichincha: Quito (*Jameson s.n.*) and in the Valley of Lloa (*Jameson s.n.*). The type specimen of *S. lehmanniana* was collected in the Province of Pichincha: west of Cerro Corazon (south of Quito), near Canchacoto (*Lehman 126*). Both species display similar morphological features. Based on examination of the herbarium specimens (digital images) and a dissected flower of the lectotype

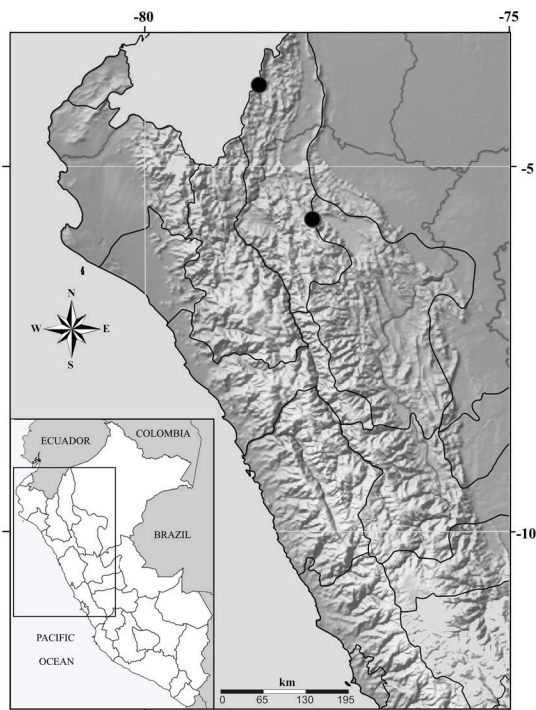


FIGURE 4. Distribution map of *Sertifera purpurea* (black circles) in Peru.

of *S. lehmanniana* (microscope slide prepared by Garay, HUH-82476), the feature that distinguishes *S. lehmanniana* from *S. purpurea* is that the first displays ovate-oblong to ovate-ligulate petals (vs. ovate-elliptic to subrhombic). Dunsterville and Garay (1966) considered that they both represent the same species and placed *S. lehmanniana* as synonym of *S. purpurea*; we agree with that assessment.

*Sertifera colombiana* is also similar to *S. purpurea* (Schlechter 1920, Mansfeld 1929, plate 13, nr. 46); however, additional research is necessary to state whether they are the same species.

**ACKNOWLEDGEMENTS.** We thank the staff and curators of AMES, K, G, and W for their help looking for the type material in their institutions. We also thank Stig Dalström and Günter Gerlach for their help with the bibliography; José Edquén for providing photographs of *Sertifera purpurea*. M. Acuña-Tarazona thanks to the Peruvian authorities for granting a permission for collecting plant specimens (research permit N° 007-2016-SERNANP-BPAM-JEF). M. Acuña-Tarazona also thanks Roner Espinar, Juan Cusi, Elluz Huamán, José Ramírez, José Edquén, and Elmer Mondragon for their invaluable help during the

fieldwork. The Rufford Foundation (grant no. 18872-1) and the American Orchid Society supports the work to Acuña-Tarazona., who also acknowledges CONACYT (no. 280642) for supporting her Ph.D. studies at the Instituto de Ecología, A. C. We also thank anonymous reviewers for commenting on and improving the manuscript.

## LITERATURE CITED

- Baranow, P., Dudek, M. & Szlachetko, D. L. (2017). *Brasolia*, a new genus highlighted from *Sobralia* (Orchidaceae). *Plant Systematics and Evolution*, 303, 853–871. doi: 10.1007/s00606-017-1413-z
- Chase, M. W., Cameron, K. M., Freudenstein, J. V., Pridgeon, A. M., Salazar, G., Van den Berg, C. & Schuiteman, A. (2015). An updated classification of Orchidaceae. *Botanical Journal of the Linnean Society*, 177, 151–174.
- Dunsterville, G. C. K. & Garay, L. A. (1966). *Venezuelan Orchids Illustrated V*. London: Andre Deutsch Limited.
- Garay, L. A. (1978). Orchidaceae (Cyripedioideae, Orchidoideae, Neottioideae). Pp.1–305 In: G. Harling & B. Sparre (Eds.), *Flora of Ecuador 9*. Göteborg and Stockholm: University of Goteborg and Swedish Museum of Natural History.
- Kraenzlin, F. (1899). Orchidaceae Lehmannianae in Guatemala, Costa-Rica, Columbia et Ecuador collectae, quas determinavit et descripsit. *Botanische Jahrbücher für Systematik, Pflanzengeschichte und Pflanzengeographie*, 26, 437–502.
- Mansfeld, R. (Ed.). (1929). *Figuren-Atlas zu den Orchideenfloren der südamerikanischen Kordillerenstaaten. Repertorium Specierum Novarum Regni Vegetabilis, Beihefte*, 57.
- Neubig, K. M., Whitten, W. M., Blanco, M. A., Endara, L., Williams, N. H. & Koehler, S. (2011). Preliminary molecular phylogenetics of *Sobralia* and relatives (Orchidaceae: Sobralieae). *Lankesteriana*, 11(3), 307–318. doi: 10.15517/LANK.V11I3.18286
- Reichenbach, H. G. (1877). Orchidiographische Beiträge. *Linnaea*, 41, 17–98.
- Schlechter, R. (1920). Die Orchideenfloren der südamerikanischen Kordillerenstaaten II. Colombia. *Repertorium Specierum Novarum Regni Vegetabilis, Beihefte*, 7, 1–301.
- Schlechter, R. (1924). Beiträge zur Orchideenkunde von Colombia I. Orchidaceae Hoppianae. *Repertorium Specierum Novarum Regni Vegetabilis Beihefte*, 27, 5–123
- Schulenberg, T. & Awbrey, K. (Eds.). (1997). *The Cordillera del Condor region of Ecuador and Peru: A biological assessment*. RAP Working Papers Number 7. Washington, D.C.: Conservation International.
- Schweinfurth, C. (1938). Nomenclatorial notes VII. *Botanical Museum Leaflets*, 6(5), 112.
- Schweinfurth, C. (1946). Orchidaceae Andinae-II. *Revista de la Academia Colombiana de Ciencias Exactas, Físicas y Naturales*, 6, 573–577.
- Szlachetko, D. L. & Baranow, P. (2014). Notes on the Genus *Sertifera* (Orchidaceae, Epidendroideae). *Systematic Botany*, 39(1), 41–54. doi: 10.1600/036364414X678143
- Szlachetko, D. L., Kolanowska, M. & Medina Trejo, R. (2014). First white-flowered species of *Sertifera* (Orchidaceae) discovered in Colombia. *Biodiversity: Research and Conservation*, 35, 19–24. doi: 10.2478/biorc-2014-0019
- Williams, L. O. (1939). Orchidaceae Austro-Americanae I. *Lilloa*, 5, 5–11.